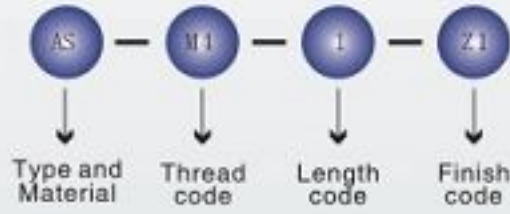


FLOATING SELF-CLINCHING FASTENERS

TYPES-AS, AC, LAS, LAC

Part Number Designation



Materials

Type AS, LAS: Heat-treated Carbon Steel.
Type AC, LAC: 300 Series Stainless Steel.

Finishes

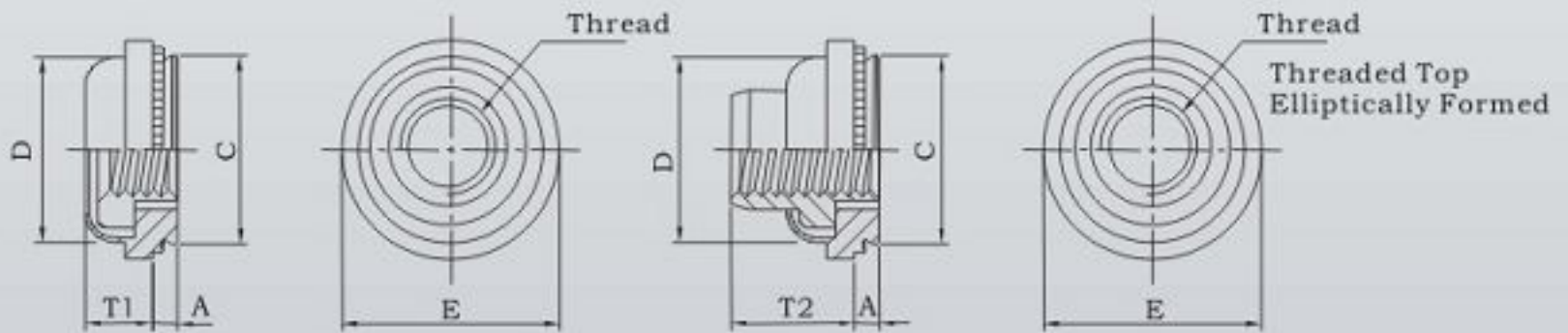
Type AS, LAS: Zinc plate.
Type AC, LAC: Passivation.

NON-LOCKING

Types AS, AC

SELF-LOCKING

Types LAS, LAC



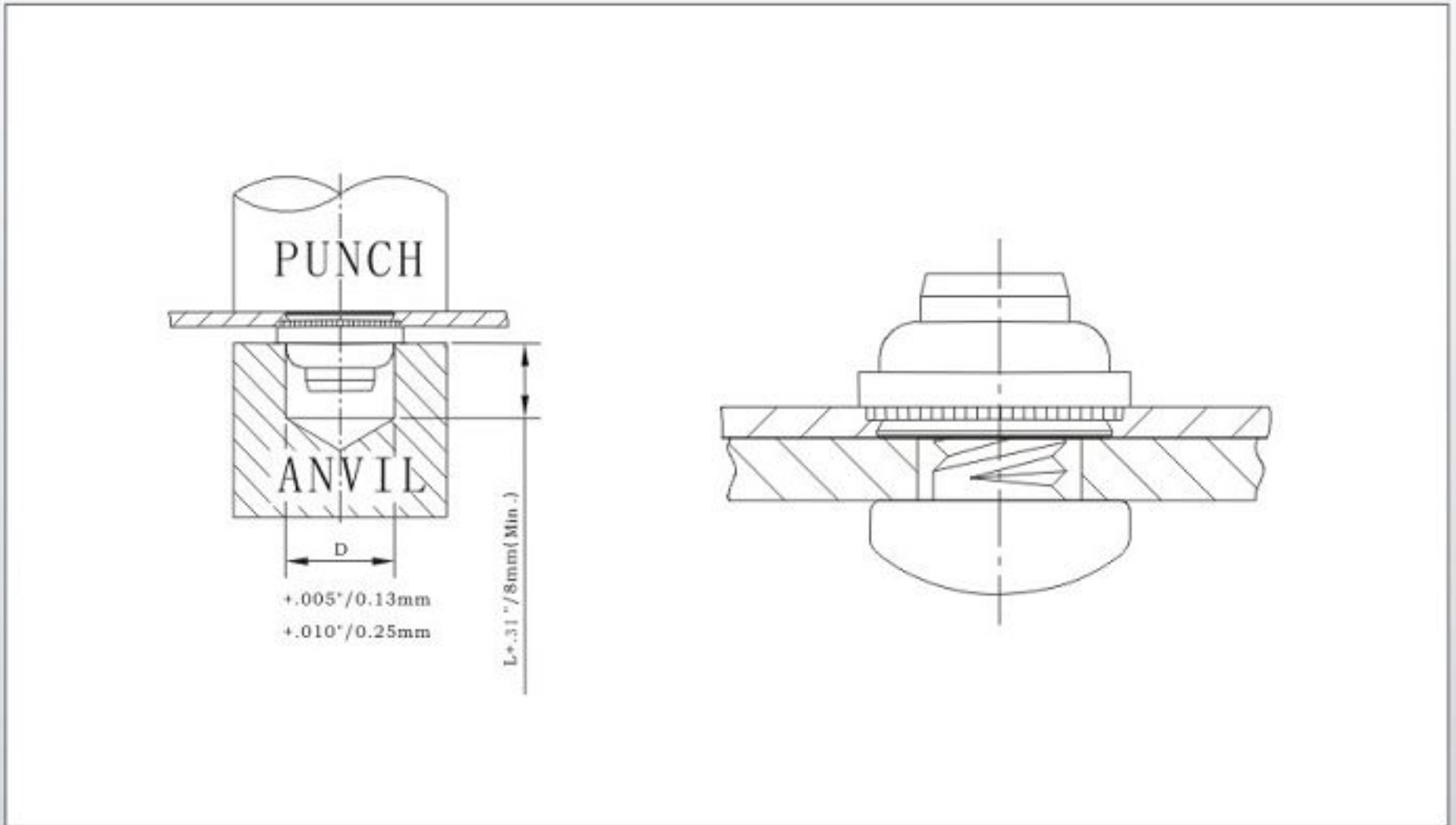
All dimensions are in inches

	Thread Size	Type				Thread Code	Shank Code	A (Shank) Max.	Min. Sheet Thickness	Hole Size In Sheet +.003 -.000	C Max.	D Max.	E ±.015	T1 Max.	T2 Max.	Min. Dist. Hole C/L To Edge
		Carbon Steel	Stainless Steel	Carbon Steel	Stainless Steel											
UNIFIED	.112-40 (#4-40)	AS	AC	LAS	LAC	440	1	.038	.040	.290	.289	.290	.36	.13	.19	.30
		2	.054	.056												
	.138-32 (#6-32)	AS	AC	LAS	LAC	632	1	.038	.040	.328	.327	.335	.39	.13	.20	.32
		2	.054	.056												
	.164-32 (#8-32)	AS	AC	LAS	LAC	832	1	.038	.040	.368	.367	.365	.44	.13	.21	.34
		2	.054	.056												
	.190-24 (#10-24)	AS	AC	LAS	LAC	032	1	.038	.040	.406	.405	.405	.47	.17	.27	.36
		2	.054	.056												
.190-32 (#10-32)	AS	AC	LAS	LAC	024	1	.038	.040	.406	.405	.405	.47	.17	.27	.36	
	2	.054	.056													
.250-20 (1/4-20)	AS	AC	LAS	LAC	0420	2	.054	.056	.515	.514	.510	.60	.21	.31	.42	
.250-28 (1/4-28)	AS	AC	LAS	LAC	0428	2	.054	.056	.515	.514	.510	.60	.21	.31	.42	

All dimensions are in millimeters

	Thread Size	Type				Thread Code	Shank Code	A (Shank) Max.	Min. Sheet Thickness	Hole Size In Sheet +0.08	C Max.	D Max.	E ±0.4	T1 Max.	T2 Max.	Min. Dist. Hole C/L To Edge
		Carbon Steel	Stainless Steel	Carbon Steel	Stainless Steel											
METRIC	M3x0.5	AS	AC	LAS	LAC	M3	1	0.97	1.0	7.4	7.34	7.4	9.1	3.3	4.8	7.2
		2	1.37	1.4												
	M4x0.7	AS	AC	LAS	LAC	M4	1	0.97	1.0	9.4	9.32	9.3	11.2	3.3	5.3	8.6
		2	1.37	1.4												
M5x0.8	AS	AC	LAS	LAC	M5	1	0.97	1.0	10.3	10.29	10.3	11.9	4.3	6.8	9.0	
	2	1.37	1.4													
M6x1.0	AS	AC	LAS	LAC	M6	2	1.37	1.4	13.1	13.06	13.0	15.3	5.3	7.9	11.0	

INSTALLATION AND USE



PERFORMANCE DATA

TYPE AS,AC,LAS,LAC

	Thread Code	Shank Code	Test Sheet Material								
			2024-T3 Aluminum			5052-H34 Aluminum			Cold-rolled Steel		
			Installation (lbs.)	Retainer Push out (lbs.)	Retainer Torque-out (in. lbs.)	Installation (lbs.)	Retainer Push out (lbs.)	Retainer Torque-out (in. lbs.)	Installation (lbs.)	Retainer Push out (lbs.)	Retainer Torque-out (in. lbs.)
UNIFIED	440	1	3000	220	65	1500	215	65	3000	300	85
		2		225	150	2000	225	80			150
	632	1	3000	235	110	2000	240	140	3000	300	150
		2		275	150		250	150			175
	832	1	3000	240	110	2000	250	140	3000	300	150
		2		300	150		265	150			200
	024 032	1	3500	300	150	2000	300	150	3500	400	150
		2			200		350	175			450
	0420 0428	2	5000	300	325	3000	400	325	5000	500	325

	Thread Code	Shank Code	Test Sheet Material								
			2024-T3 Aluminum			5052-H34 Aluminum			Cold-rolled Steel		
			Installation (KN)	Retainer Push out (N)	Retainer Torque-out (N.m)	Installation (KN)	Retainer Push out (N)	Retainer Torque-out (N.m)	Installation (KN)	Retainer Push out (N)	Retainer Torque-out (N.m)
M3	1		13.0	978	7.3	7	956	7.3	13.0	1334	9.0
	2		14.0	1000	17.0	9	1000	9	14.0	1334	17.0
M4	1		14.0	1067	12.0	9	1112	12.0	14.0	1334	17.0
	2		15.0	1334	17.0	10	1178	17.0	15.0	1779	22.0
M5	1		15.0	1334	17.0	10	1334	17.0	15.0	1779	17.0
	2		16.0	1334	22.0	11	1556	19.0	16.0	2001	22.0
M6	2		23.0	1334	36.0	14	1779	36.0	23.0	2224	36.0